

Suprep Bowel Prep

Please read directions carefully as inadequate preparation could result in repeat procedures, reduced ability to detect polyps or possibly having to reschedule your procedure.

THE DAY BEFORE YOUR COLONOSCOPY:

DRINK ONLY CLEAR LIQUIDS ALL DAY. NO SOLID FOOD.

It is important to prepare your body with plenty of clear liquids before the prep. The explanation of a clear liquid diet is anything you can see through if held up to a light.

The following clear liquids are approved for you to drink in preparation for your upcoming procedure:

- Water, black coffee or tea (*no cream or artificial cream*)
- Strained fruit juices WITHOUT pulp (for example: apple, white grape)
- Clear broth or bouillon (for example: chicken or beef or vegetable broth)
- Carbonated or noncarbonated CLEAR soft drinks (for example: Sprite, ginger ale)
- Gatorade, Kool-Aid or lemonade with no pulp (**NO RED, BLUE OR PURPLE**)
- Plain Jell-O (without fruit or toppings) (**NO RED, BLUE OR PURPLE**)
- Popsicles (**NO RED, BLUE OR PURPLE**)
- **NO DAIRY PRODUCTS**

START THE PROCESS BELOW AT 6:00 PM:

STEP A – At 6:00 PM the night before your procedure: Complete steps 1-4 on the back of this page with the first bottle of SUPREP

DO NOT have anything by mouth after midnight EXCEPT the 2nd dose of Suprep.

STEP B – At 4:00 AM the morning of your procedure: Complete steps 1-4 on the back of this page again with the second bottle of SUPREP

*If you have questions prior to your procedure, please call
Erlanger Gastroenterology at 423-778-4830.*

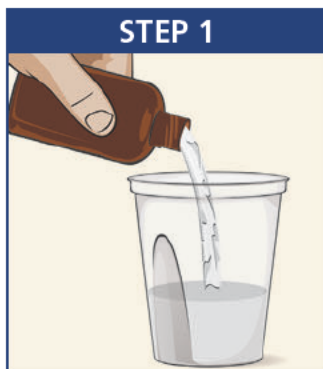
Suprep Bowel Prep Continued

YOU WILL COMPLETE THE FOLLOWING STEPS TWO TIMES:

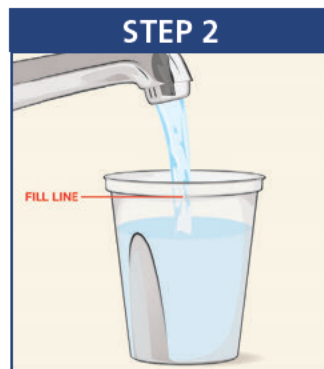
STEP A – At 6:00 PM the night before your procedure

STEP B – At 4:00 AM the morning of your procedure

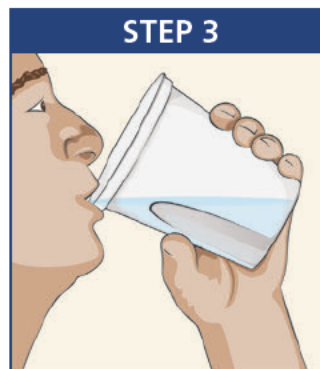
BOTH 6-ounce bottles are required for a complete preparation. It is important to follow ALL the steps listed below completely.



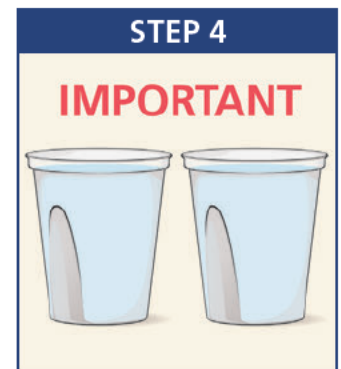
Pour **ONE** (1) 6-ounce bottle of SUPREP liquid into the mixing container.



Add cool drinking water to the 16-ounce line on the container and mix.
NOTE: Dilute the solution concentrate as directed prior to use.



Drink **ALL** the liquid in the container.



You **must** drink two (2) more 16-ounce containers of water over the next 1 hour.

NOTE: You must finish drinking the final glass of water at least hour, or as directed, before your colonoscopy.

If you have questions prior to your procedure, please call
Erlanger Gastroenterology at 423-778-4830.