

## Your Doctor Needs to Know

Some temporary unwanted effects of treatment may occur, such as frequent urination, discomfort with urination, or flu-like symptoms. Most of the reactions are related to irritation of the bladder, but they may affect the whole body. Symptoms typically begin four to six hours after treatment and last 24 to 72 hours.

## Report Unusual Symptoms

Notify your doctor at once if you experience any problems, particularly urinary symptoms such as blood in your urine, an urgent or frequent need to urinate, other unusual symptoms, or flu-like symptoms (such as fever, chills, increased fatigue, nausea/vomiting, headache, or dizziness).

Also report joint pain, coughing, or rash. It is especially important to report these symptoms to your doctor before you receive the next treatment of BCG. These symptoms may be a sign that you have an infection requiring immediate attention. You should be aware that untreated infections have led to death on rare occasions.

**Symptoms lasting longer than 48 hours or a fever of 101.3 (or higher) should be reported to your physician immediately.**



## Erlanger Urology

Three Convenient Locations

### Medical Mall

979 E. Third Street, Suite C-925  
Chattanooga, TN 37403  
PH 423.778.5910  
FX 423.778.5915

### Erlanger East

1755 Gunbarrel Road, Suite 209  
Chattanooga, TN 37421  
PH 423.778.8478  
FX 423.778.8479

### Two Northgate Park

2158 Northgate Park, Suite 104  
Chattanooga, TN 37415  
423-778-6941



## Your guide to BCG Therapy for Bladder Cancer

A service provided by  
Erlanger Urology



## BCG Treatment Information

BCG contains live, attenuated bacteria. The medication was developed as a vaccine against tuberculosis but has been found useful in preventing recurrence certain bladder cancers.

Doctors have been using BCG for many years to prevent recurrence of tumors in patients with bladder cancer.

How BCG works to treat bladder cancer is not completely understood. A partial explanation is that it appears to produce an inflammation in the lining of the bladder and it also seems to stimulate the immune system.

In order to work, BCG must be in direct contact with the tumor cells. That's why it is instilled (administered directly into the bladder) instead of being given by injection.

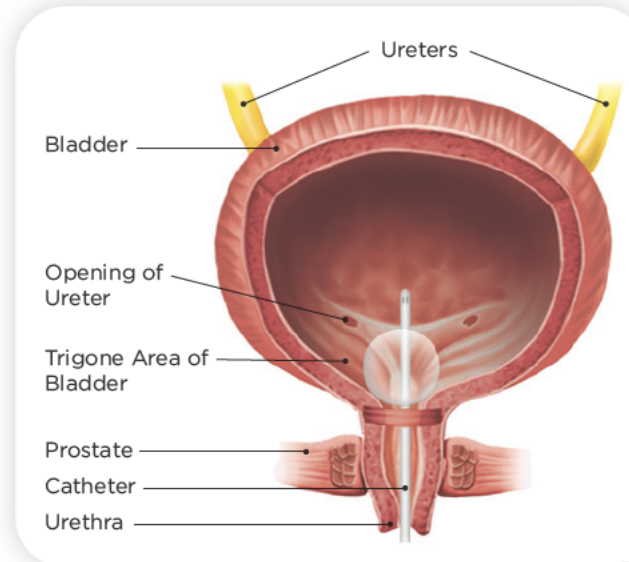
### About the BCG Treatment

Just before your treatment you will empty your bladder. Your genital area is cleaned with a sterile solution and you are draped with a sheet.

A small tube ( a catheter) is passed through your urethra and into your bladder. Any urine that remains in your bladder is removed so that the BCG can easily touch all of the bladder lining.

The BCG mixture is administered into your bladder through the catheter. The catheter is then removed.

The medication stays in your bladder for two hours. You will be lying down the first hour. Your position will be changed from time to time to make sure the BCG is in contact with all parts of the lining of the bladder long enough to be effective. You will lay on each side, stomach and back for 15 minutes each.



### After the Treatment

Once outside your body, the BCG fluid may be unsafe for you or others to touch. With proper and simple precautions, the bacteria is not likely to be passed along to other people. After treatment, there are some safety steps you must follow.

To get the medicine out of your bladder and avoid splashing, sit down on the toilet to urinate. Touching the medicine outside the bladder may be unsafe for you and others.

- After you urinate, add two cups of chlorine bleach to the toilet, close the lid, and wait 15 minutes before flushing.
- Wash your genital area and your hands carefully with soap and water each time you urinate.
- For the first six hours after each treatment, follow all the steps given above each time you urinate.

The treatment may be uncomfortable, but it usually isn't painful. The instillation (pouring the medicine into your bladder) takes only a few minutes. However, the medicine must stay in your bladder for two hours to be fully effective. The process itself is simple.

For more information on this procedure or our other services or resources, call 423-778-5910 or visit [erlanger.org/urology](http://erlanger.org/urology).